

# Learning Objectives Development - Task Data Form

Analyze phase - Front end analysis is defined into a Master Task List. This list will aid in assigning courses to the intended audience once we are ready to launch training. An analysis will determine if legacy and projected training is relevant to current tasks.

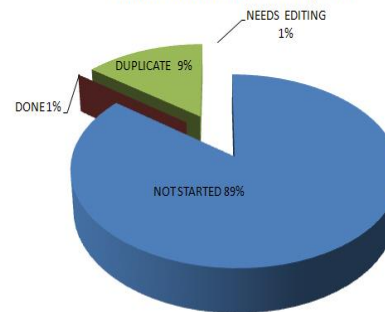
Project: SBS		Data Gathering Methods: Interview & Observation					
Job: SBS		Source(s) of Information: Frontline Supervisor, Senior Supervisor, Distribution Rep 4, Distribution Center Rep 4, Processor, SJTs, support documents					
Accomplishment/Duty: Processor		Date(s) Information Collected: April 8, 2005					
Tasks	Cues	Outcomes	Criteria for Success of Task	Task Documented Yes/No	D	I	F
Prepare for Processing	Shift is beginning  Processor is returning from lunch or break	Bench is prepared  Processor is logged onto CRT	<ul style="list-style-type: none"> <li>✓ Bench is adjusted correctly</li> <li>✓ Supplies are replenished according to Supply List</li> <li>✓ All required equipment is on</li> <li>✓ Water in tape machine is more than 1/3 full</li> <li>✓ Correct user ID and passwords are entered in CRT</li> <li>✓ CRT is ready to scan worksheet</li> </ul>	Yes	1	2	3

# Front End Analysis Master Task List & Activities

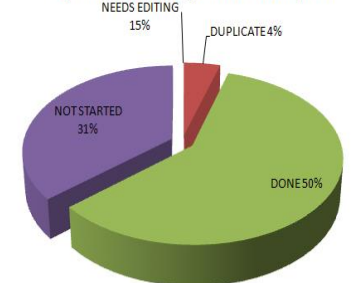
In Work and_projected PJAs-BACK UP ONLY.xlsx - Microsoft Excel					
D155					
A	B	C	D	E	F
	Lesson	PJA	Description		
1					
2	X02-103-110_GDR & Crypto Key Loading		Intro: The Off board Mission Support Environment ( environment in which Mission Planning, Mission Deb		
3		X02-103-110-01	Create GDR Instance in CMMS		
4		X02-103-110-02	Create Work Order		
5		X02-103-110-03	Demonstrate Adding FUR Attachment		
6		X02-103-110-04	Demonstrate Assigning Maintainer		
7		X02-103-110-05	Demonstrate Assigning Work Order to PMA from CM		
8		X02-103-110-06	Demonstrate Synchronizing PMA to SOU		
9		X02-103-110-07	Demonstrate Executing Work Order		
10		X02-103-110-08	Demonstrate Completing MA_ Uploading Key		
11		X02-103-110-09	Demonstrate Complete Work Order		
12		X02-103-110-10	Demonstrate Sign Off Work Order		
13		X02-103-110-11	Demonstrate PMA Release WO to SOU		
14		X02-103-110-12	Demonstrate Add Data Package (Red Key)		
15		X02-103-110-13	Demonstrate View Crypto Key Reports		
16	X02-103-111_TimeComptnTempls		Creating WO's from TimeComptnTemplates		
17		X02-103-111-01	Demonstrate Activating TCTD from MOD Info tab		
18		X02-103-111-02	Demonstrate Editing TCTD Template		
19		X02-103-111-03	Describe TCTD on AV Status window		
20		X02-103-111-04	Demonstrate Adding Solution from Template w/JTD Module		
21		X02-103-111-05	Describe Incorporated TCTD Status		
22	X02-103-112_FollowOn Maint		FMR Intro: Off Aircraft Maintenance is also called Follow on Maintenance (FMR)Requirement, used to capture off-aircraft outstanding maintenance actions that need to be completed when the item is installed in an aircraft. FMRs will follow the item on the EEL. Process was covered in Sprint Review 5/12/2011 Off-Aircraft maintenance activities may involve the following components: - Loose AV Components - Support Equipment (SE) - Engine		
23		X02-103-112_01	Demonstrate Single Part Request from CMMS Inventory		
24		X02-103-112_02	Demonstrate Complex Part Request from CMMS Inventory		
25		X02-103-112_03	Demonstrate Create MaintSpecific Task Template with Precondition		
26		X02-103-112_03	Demonstrate Creating MaintSpecific Task Template with Follow-on		
27		X02-103-112_04	Demonstrate Generating Component Work Order		
28		X02-103-112_05	Demonstrate Part Request Creation		
			Add to lesson text and see the CMMS PSC Override workbook page 13. You may click the middle "Check Part Avail" button when SCM is integrated for retail inventory. Since you want SCM to check wholesale inventory across the		
		X02-103-112_06	Demonstrate Ordering Part Request		

Projected Lessons

CMMS Performance Job Aid Development

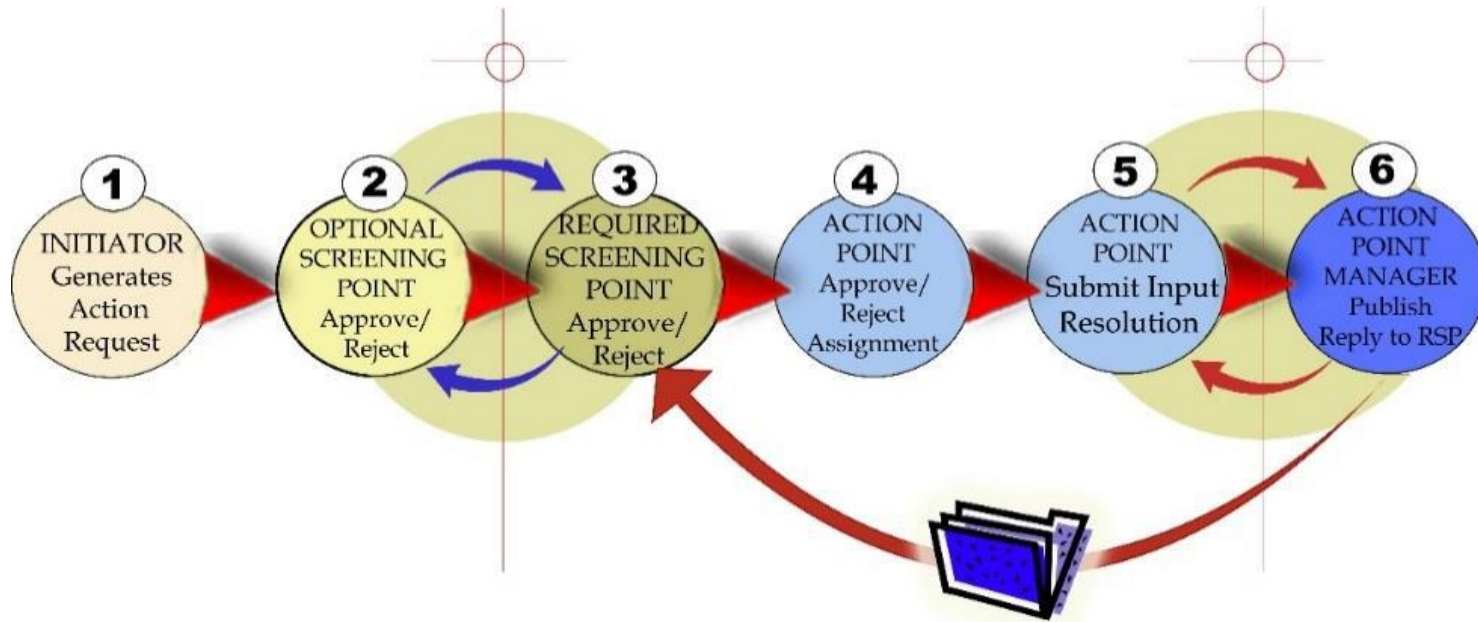


Squadron Health Management PJA Development



# Customer Ticket System Process & User Roles

## Customer Relationship Management



# Best Practices – Peer Reviews & Beta Test Trials

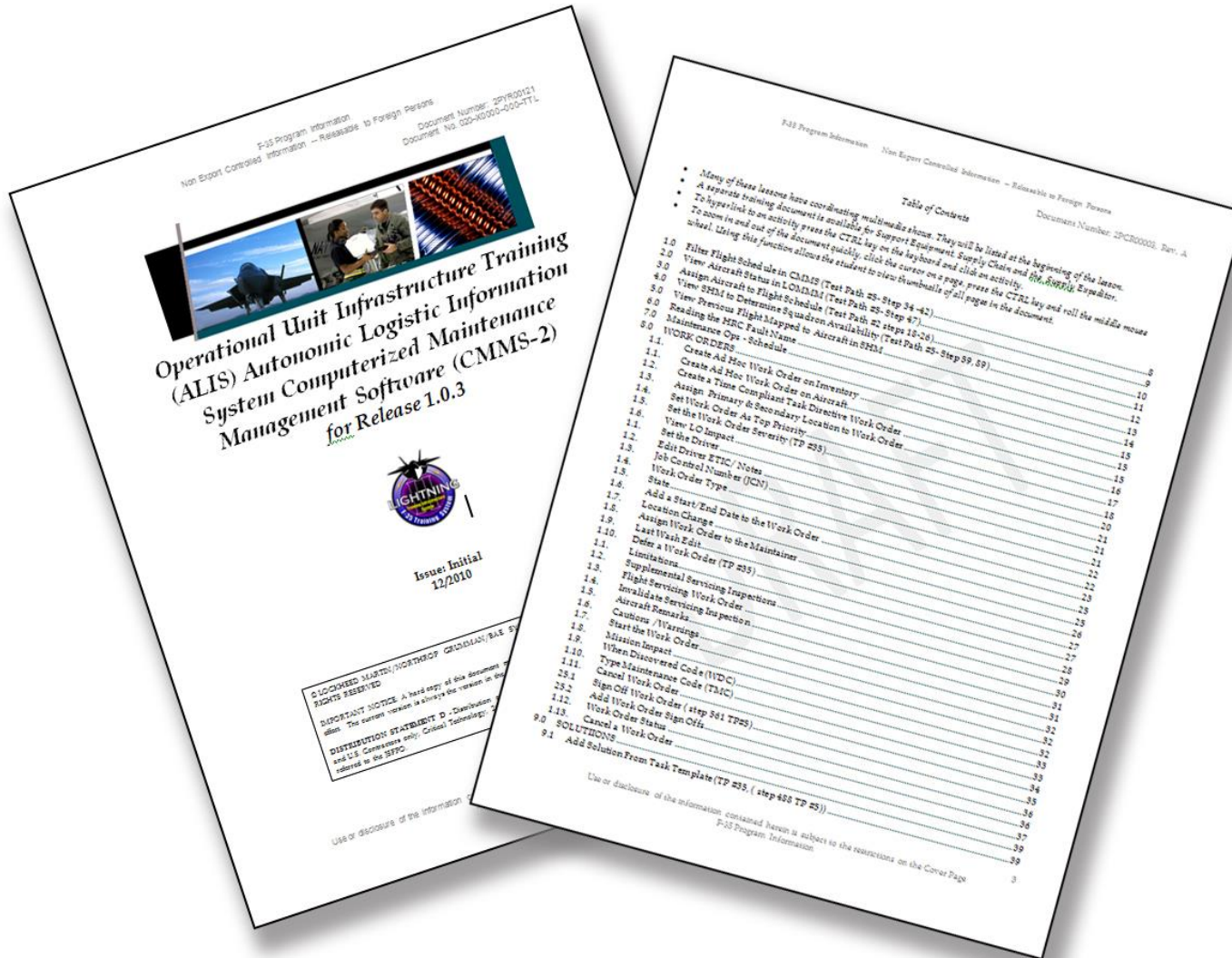
Process models achieve their full potential when each lesson starts with an introduction, describing where the student is starting in relation to the process model. The following illustration shows a process model which could be modified to support any training system.



ADDIE System Process Model



# Familiarization Training – On-the Job User's Guide



# Interactive Adobe Captivate eLearning


Module 1 Security Compliance

Lesson 1 Personal Data Protection

HomeStart

Security Compliance

Start Course



Module 1 Security Compliance  
Lesson 1 Personal Data Protection

## Learning Objectives

1. Define Personal Health Information (PHI)
2. Identify Health Information Privacy
3. Identify Secure Network Features

Module 1 Security Compliance  
Lesson 1 Personal Data Protection

HomeStart

Roll over each hotspot description

Personal Health Information PHI

Health Information Privacy

Secure Network Features

HIPAA Privacy Rules  
Health care provider medical record entries  
Treatment Information  
Billing information

Continue

Module 1 Security Compliance  
Lesson 1 Personal Data Protection

Home

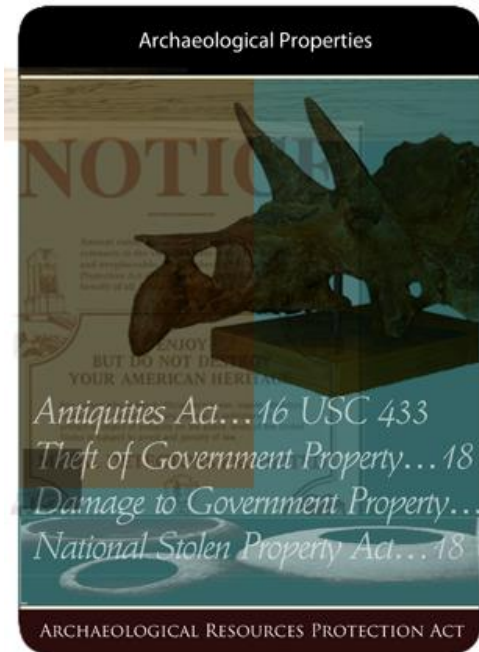
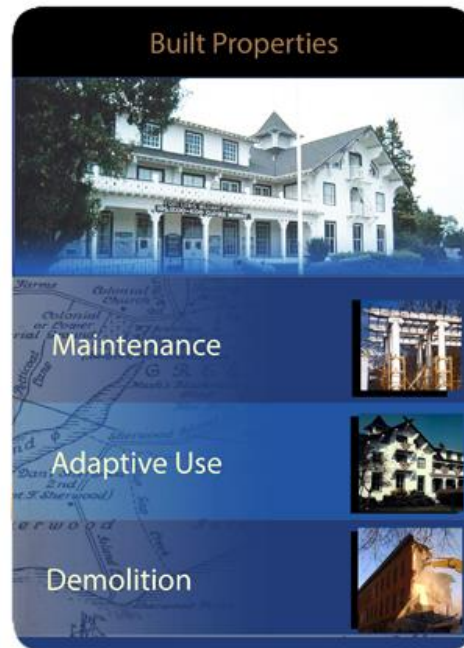
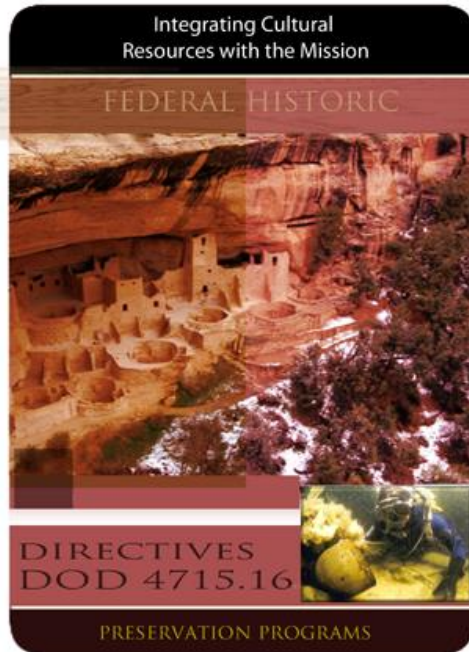
Match the following assets on the left to the categories on the right.

Demographics		Personal Health Information
Strong Passwords		Health Information Privacy
Billing Information		Secure Network Features

TRANSMIT DATA  
CLICK TO SUBMIT

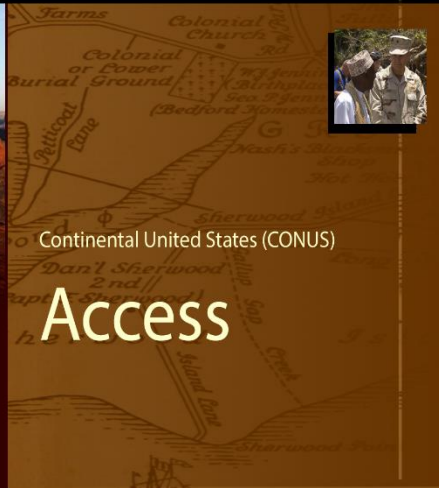


# Interactive Adobe Captivate eLearning



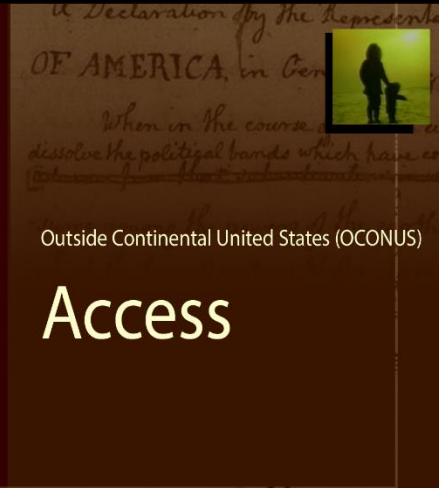
# Interactive Adobe Captivate eLearning

## Tribal Access Authorities and Access Protocol



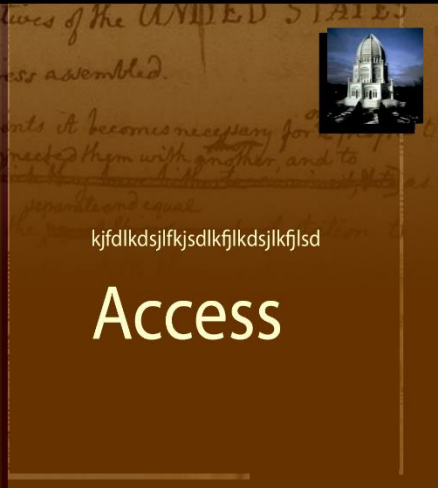
Continental United States (CONUS)

Access



Outside Continental United States (OCONUS)

Access



kjfdlkdsjlfkjsdlkfjldskjlfjlsd

Access



# Laminated Quick Cards

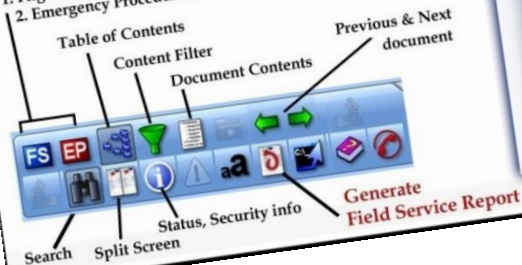
## Step by Step 1

1. Setup/ connectivity to JSF ALIS network required and System Admin must install Trilogi plug-in to view graphic images.
2. Log On to ALIS and click -> Applications -> JTD Viewer.
6. Select JTD Country: FT Service: FT1 and then click "Launch JTD Viewer".
4. On the bottom of the window, click the "Flight Series Data" button.
5. The window opens with several default screens. A few suggestions for ease of navigation:
  - A. Right click the bottom blue field to resize the buttons.

- B. Enter search data or close the field by clicking the close box directly above the search tab.
- C. When a search displays content, right click the new file name and click Undo to open a new window.
- D. Expand the double pane window by clicking the expand pane.
- E. Click the Split screen icon and then a graphic link to view a triplicate window.

For full description of navigation icons - click the manufacturers Help button then the "Navigating JTD Viewer"

1. Flight Series Data
2. Emergency Procedures,



Click text on Graphic for hyperlink



## Step by Step 2

Note. For graphic to appear: IsoView software must be installed on your computer.

6. Close the triplicate view by clicking the split screen icon again
7. Click the graphic's control icons directly below the opened graphic as desired.

Click this button 'On' then drag the over the illustration to move it.

Click 'On' then click on the graphic

Click 'On', then click on the graphic

Click 'On' then click on the graphic

Click 'On' then click on the graphic

Click 'On' then click on the graphic

Click 'On' then click on the graphic

Click 'On' then click on the graphic

Click 'On' then click on the graphic

Click 'On' then click on the graphic

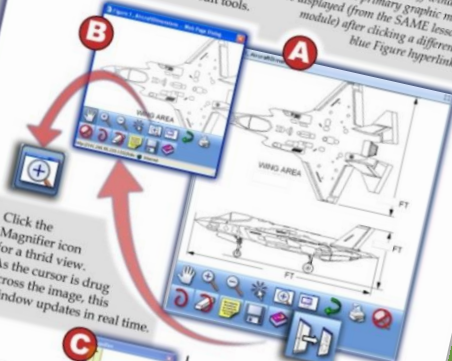
Click 'On' then click on the graphic

Click 'On' then click on the graphic

## Graphic Menu

The new window has its own zoom and edit tools.

Note: While the new Rip Off window is open, a different primary graphic may be displayed (from the SAME lesson module) after clicking a different blue Figure hyperlink.



The Rip Off button on the graphic panel creates a second window.

Tip 1: Use either magnification tool on the primary window and the Global view illustrates orientation by adjusting the thumbnail's blue bounding box!